



Covid-19 vaccination: Briefing for stakeholders

Appointments for booster vaccines can now be booked five months after the date of a person's second vaccination.

This means people eligible for a third top-up dose can plan to receive their vaccine on – or very near to – the actual day they become eligible to receive a booster, which is six months post second vaccine.

We hope that by allowing booster appointments to be booked early, those most at risk of falling seriously ill with Covid-19 will be able to get protected promptly and without delay.

More than 148,000 booster jabs have so far been given across Bath and North East Somerset, Swindon and Wiltshire, meaning almost two thirds (62 per cent) of all who are able to have the third jab have already come forward.

Gill May,
Director of Nursing and Quality

Updates



Moderna vaccine arrives at sites across BSW

Bath Racecourse and Salisbury City Hall have become the first sites in the region to begin using the Covid-19 vaccine produced by Moderna.

More local sites will begin using Moderna over the coming weeks.

All vaccine types go through the same rigorous trials and approval processes, and it is safe for people to be vaccinated with one they have not previously had.

Covid-19 vaccines to be made compulsory for healthcare staff

The government has announced that patient-facing NHS staff in England will be required to be fully vaccinated against coronavirus from next year.

Locally, 96.3 per cent of healthcare workers have had one dose of the Covid-19 vaccine, and 94.3 per cent have received both.

Those yet to take up the offer of a vaccine will be supported to do so by their employers over the coming months.



More than 10,000 vaccines given to secondary school children

A total of 10,636 Covid-19 vaccines have been given to children aged between 12 and 15-years-old in Bath and North East Somerset, Swindon and Wiltshire.

The uptake so far puts BSW in line with other health and care systems in the south west, and also means that around one in four children in this age group have now been vaccinated.

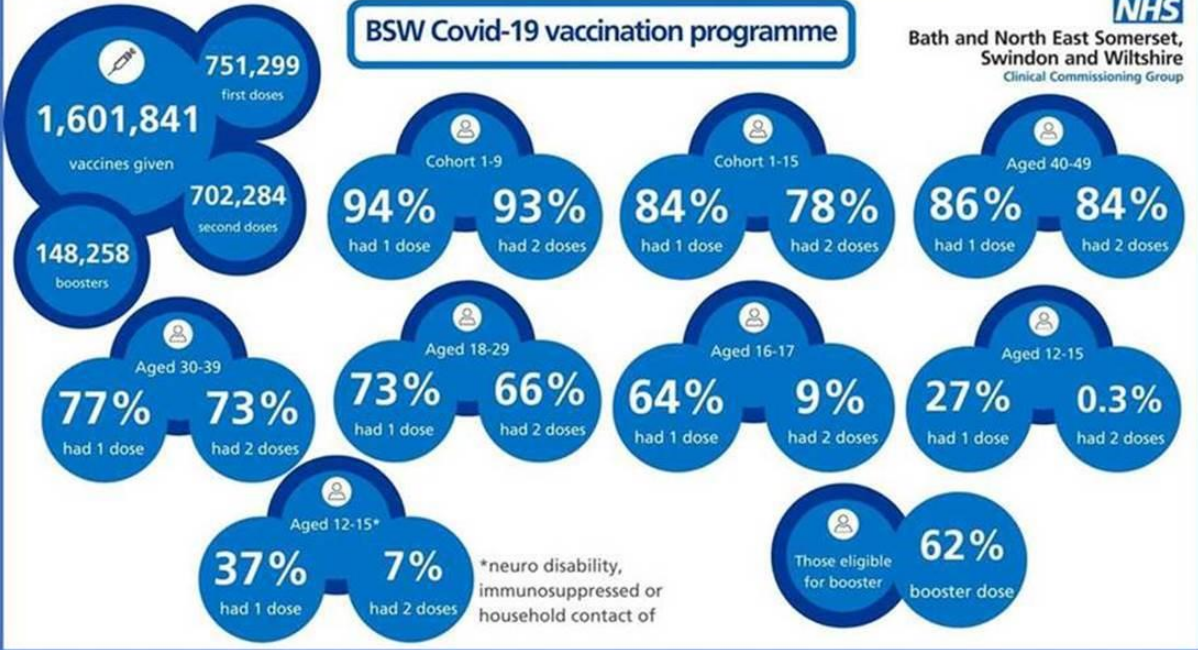
Vaccinations continue to happen in schools, and at the large vaccine sites at Bath Racecourse, Salisbury City Hall and the Steam Museum in Swindon.

Vaccination progress to date

Data correct as of 10 November 2021

BSW Covid-19 vaccination programme

NHS
Bath and North East Somerset,
Swindon and Wiltshire
Clinical Commissioning Group



The BSW Covid-19 vaccination programme is being led by BSW CCG with support from partner organisations including voluntary community and social enterprises.
